

Set Nikon Scan preferences

Launch Nikon Scan 4 software (Applications>Nikon Software>Nikon Scan 4> Nikon Scan 4)

From the main window,
Select Prefs

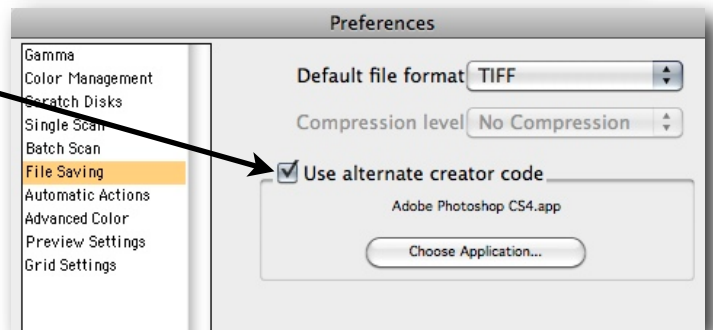
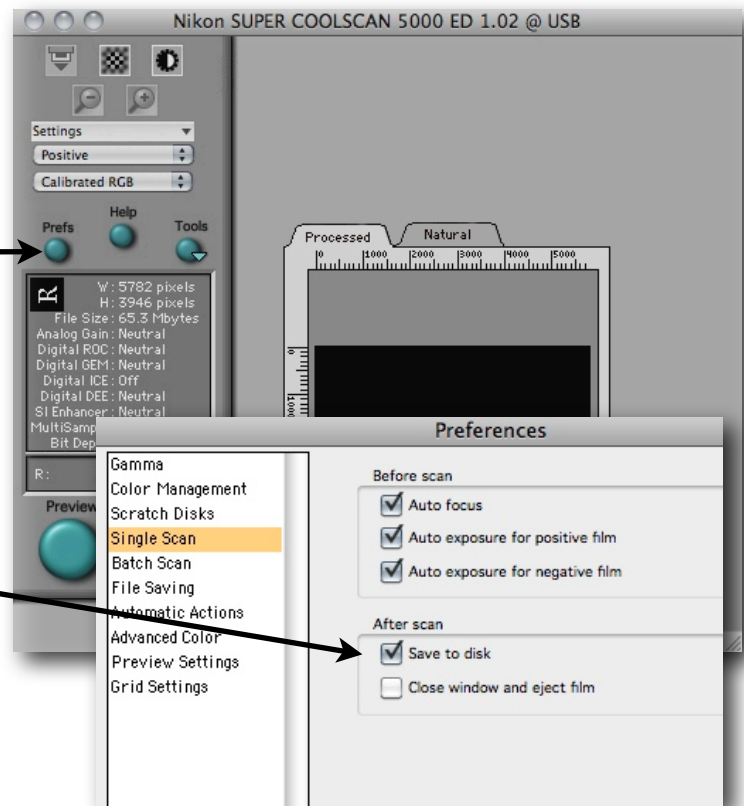
From the Preferences
window select:
1. Single Scan and choose
"Save to disk"

2. Next, Choose File Saving and select
"Use Alternate Creator Code"

Below that, click on Choose Application....

Navigate to
Applications>Adobe Photoshop CS4>Adobe Photoshop CS4
Choose Photoshop CS4

3. Click "OK" and you are ready to scan.



NOTE:

If Nikon Scan 4 crashes at launch, you will need to clear and reset the preferences. Do this by going to:
Applications>Utilities>Remove Nikon Preferences

After clearing the preferences, you will need to Reset them before you can scan again.